

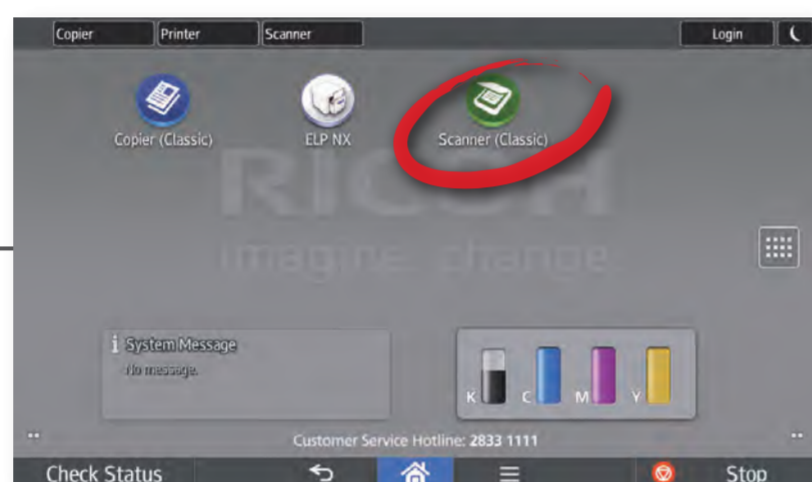
掃描功能 Scanning Function



使用指引 Operation Guide

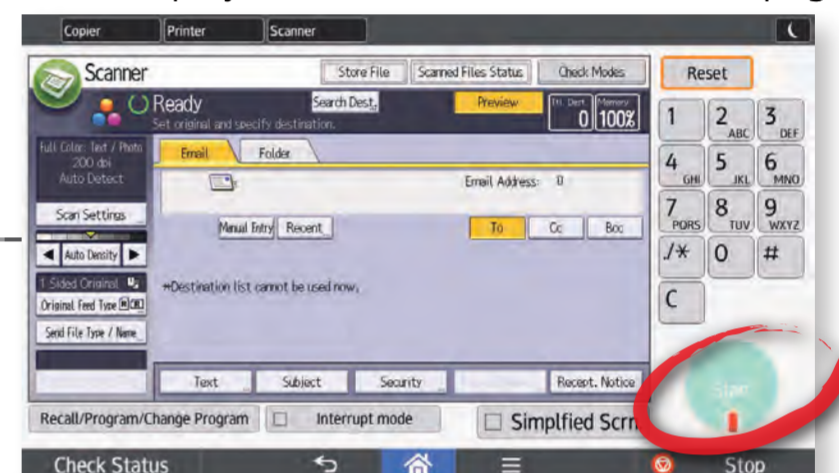
1 選擇掃描 Select Scanner

於操作板按[Scanner]按鈕
Press [Scanner] button on the panel



4 開始掃描 Start Scanning

將文件放於自動送稿器，然後按[Start]按鈕
Put a document on the feeder and press [Start] button
多功能影印機會顯示掃描頁數
MFP will display the total number of scanned pages



2 插入USB儲存器 Insert USB Storage Device

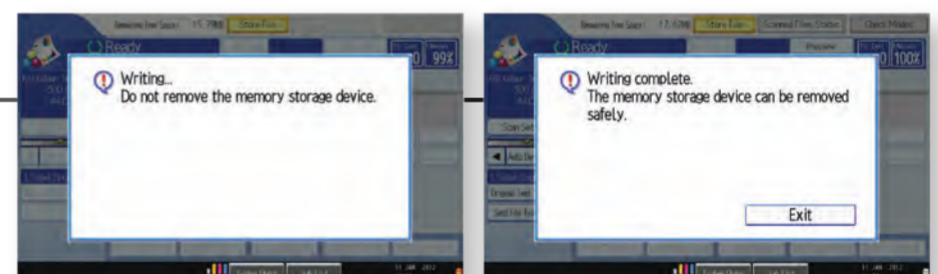
插入USB儲存器
Insert USB Storage Device
多功能影印機會顯示USB儲存器剩餘的儲存量
MFP will display the remaining space of your USB Storage Device



5 載入至USB儲存器 Write to USB Storage Device

系統會自動將掃描檔案載入USB儲存器
Scanned files will be automatically written to USB Storage Device

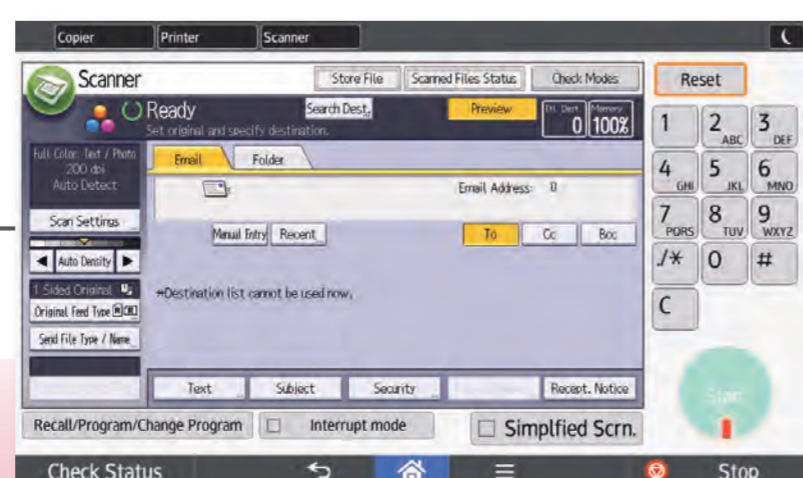
載入成功後，會顯示確認訊息
A confirmation will be displayed after the document is written to USB Storage Device successfully



註：如掃描檔案所佔的容量大過USB儲存器剩餘的儲存量，多功能影印機將顯示錯誤訊息，請再插入另一個USB儲存器及再進行掃描。
Remark: If the size of scanned file is larger than the remaining of USB Storage Device, the MFP will display an error message. Please insert another USB Storage Device and scan the file again.

3 選擇掃描功能 Select Scanning Functions

可選黑白或全彩掃描、文件格式及像素等等
Choose B/W or full colour scanning, file resolution, and etc.



6 取回USB儲存器 Remove USB Storage Device

當掃描完畢後，請取下USB儲存器
Remove USB Storage Device after scan